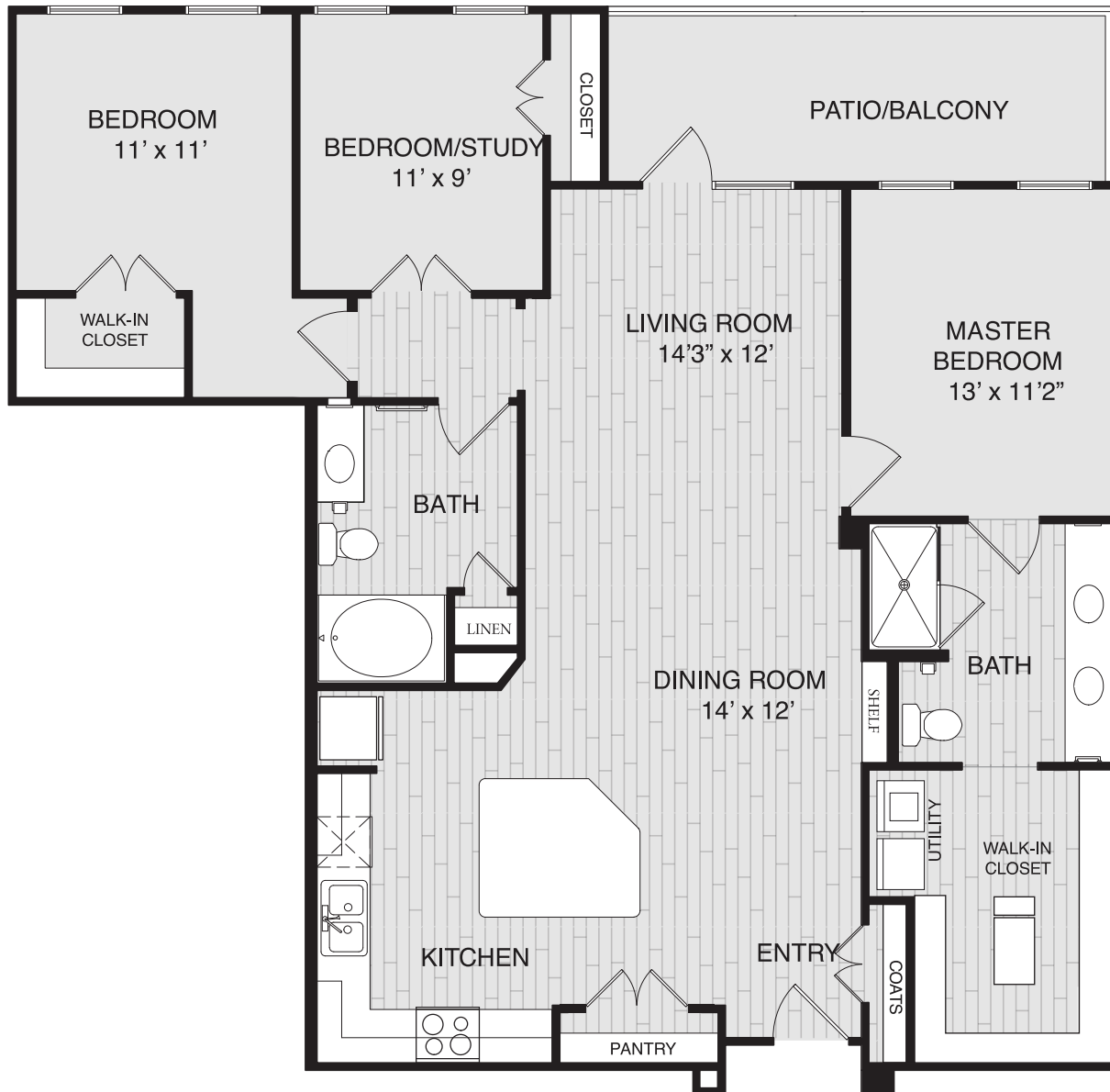




**WATERCREST**  
SHADOW CREEK RANCH

# Comal C3

**3 BED / 2 BATH - LARGE**



**Community Fee:** \_\_\_\_\_

**Monthly Fee:** \_\_\_\_\_

**Customized Care Package:** \_\_\_\_\_

*This sheet is for illustrative purposes only. Floor plans and standard features may vary according to style selected and are subject to change.*



(713) 714-5732 | 11745 Broadway Street, Pearland, TX 77584 | [WatercrestShadowCreek.com](http://WatercrestShadowCreek.com)

Integrated Senior Lifestyles (ISL) is an innovative and dynamic senior housing Management Company formed in April 2011 with the purpose of operating a comprehensive spectrum of independent, assisted living, memory care and skilled nursing communities in primary and secondary markets.