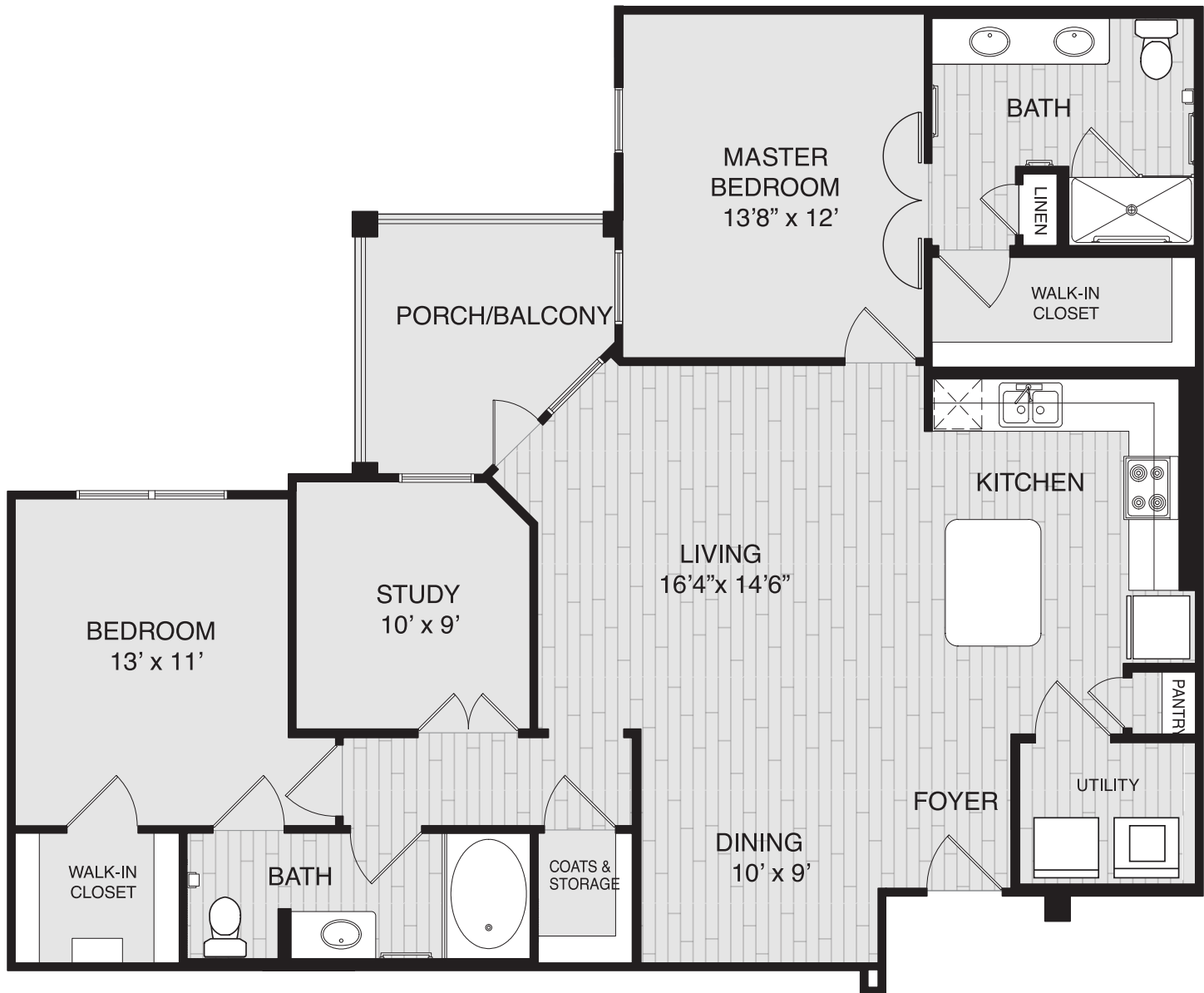




WATERCREST
SHADOW CREEK RANCH

Sabine C2

2 BED / 2 BATH / STUDY - CLASSIC



Community Fee: _____

Monthly Fee: _____

Customized Care Package: _____

This sheet is for illustrative purposes only. Floor plans and standard features may vary according to style selected and are subject to change.



(713) 714-5732 | 11745 Broadway Street, Pearland, TX 77584 | WatercrestShadowCreek.com

Integrated Senior Lifestyles (ISL) is an innovative and dynamic senior housing Management Company formed in April 2011 with the purpose of operating a comprehensive spectrum of independent, assisted living, memory care and skilled nursing communities in primary and secondary markets.