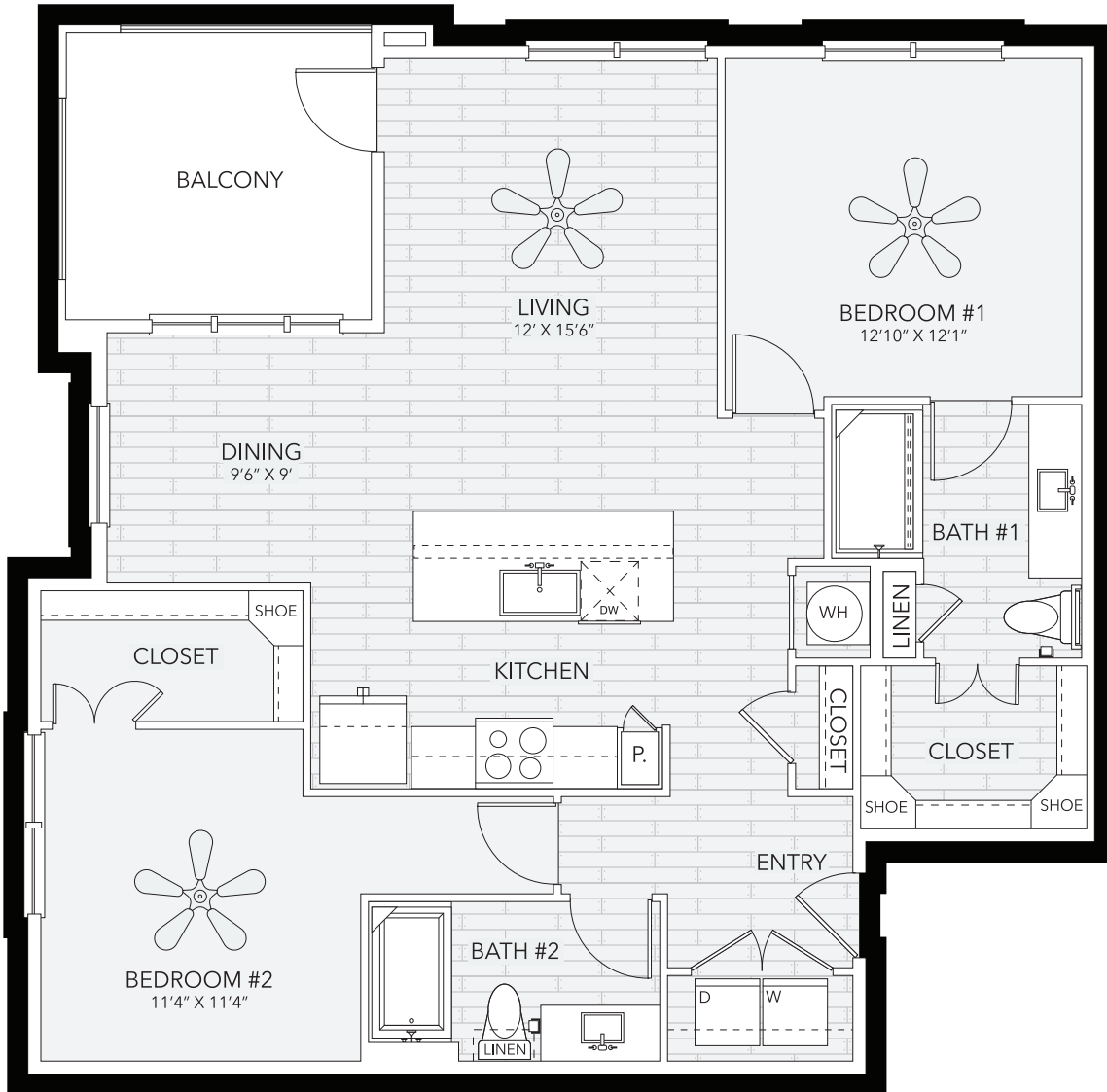




WATERMERE
ROUND ROCK

PEDERNALES

2 BED / 2 BATH | B2 | 1,205 SQFT



** All square footage is approximate*

COMMUNITY FEE: _____ MONTHLY FEE: _____

CUSTOMIZED OPTIONS: _____



(737) 358-6123 | 725 UNIVERSITY BLVD, ROUND ROCK, TX 78665 | WATERMEREROUNDROCK.COM

Integrated Senior Lifestyles (ISL) is an innovative and dynamic senior housing Management Company formed in April 2011 with the purpose of operating a comprehensive spectrum of independent, assisted living, memory care and skilled nursing communities in primary and secondary markets.