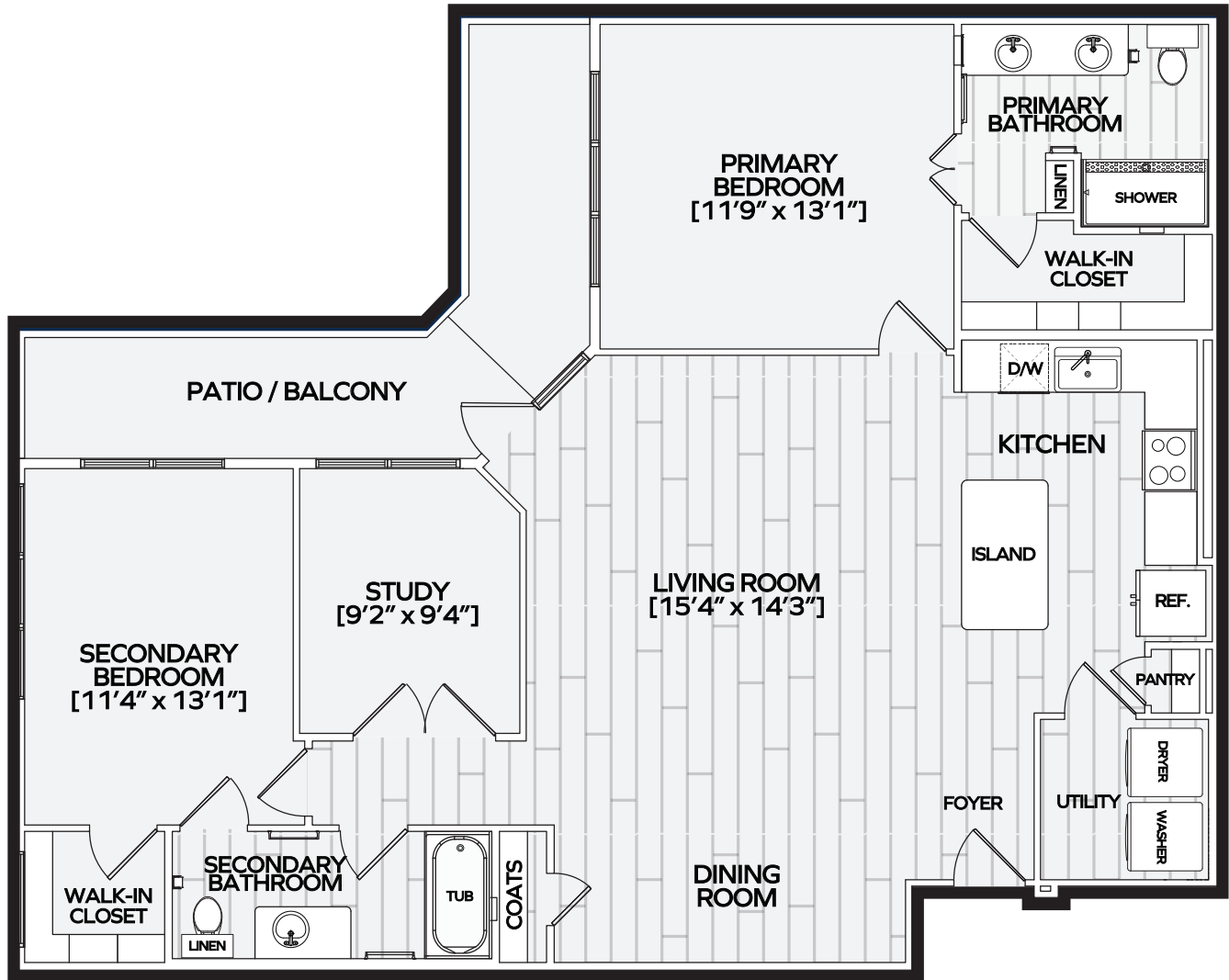




**WATERMERE**  
PRESERVE

# SABINE

**2 BED + STUDY / 2 BATH**



COMMUNITY FEE: \_\_\_\_\_ MONTHLY FEE: \_\_\_\_\_

CUSTOMIZED OPTIONS: \_\_\_\_\_



(817) 796-6849 | 8625 DAVIS BLVD, NORTH RICHLAND HILLS, TX 76182 | WATERMEREPRESERVE.COM

Integrated Senior Lifestyles (ISL) is an innovative and dynamic senior housing Management Company formed in April 2011 with the purpose of operating a comprehensive spectrum of independent, assisted living, memory care and skilled nursing communities in primary and secondary markets.